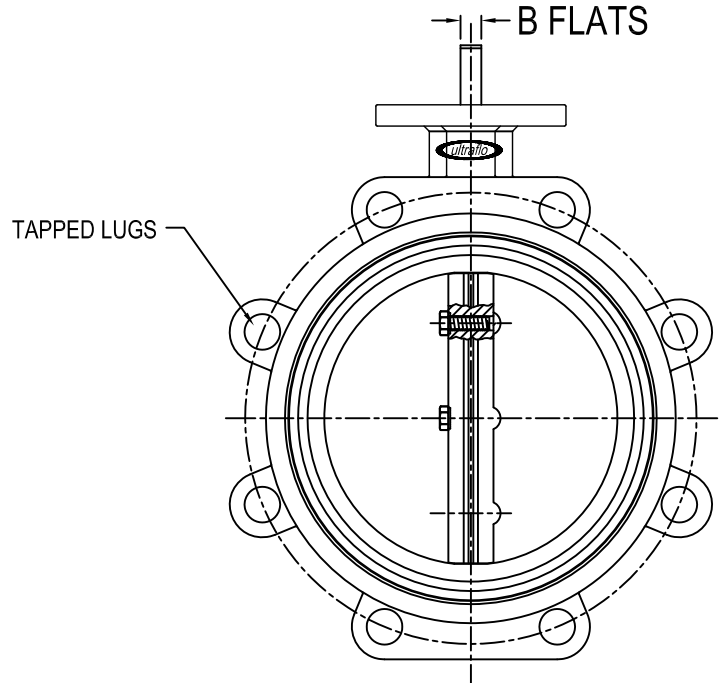
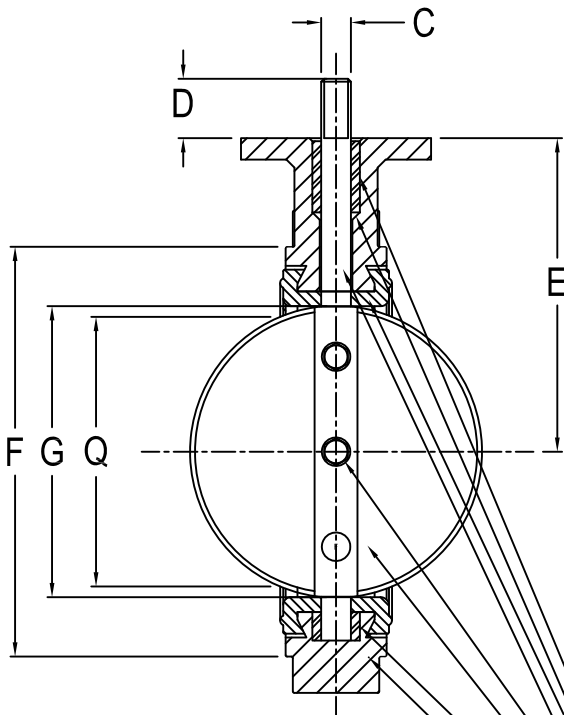
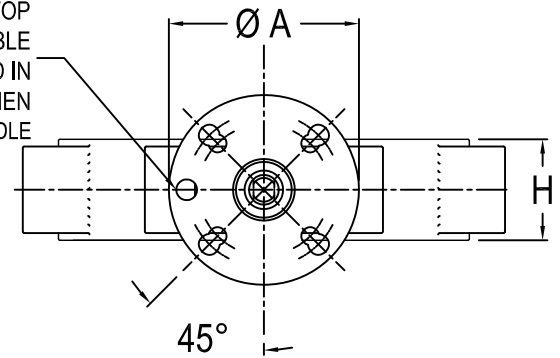


ATTENTION PLEASE CHECK THE ULTRAFLO WEBSITE AT www.ultraflovalve.com TO ENSURE YOU HAVE THE MOST RECENT COPY OF THIS DOCUMENT

NOTES:

1. ALL DIMENSIONS IN INCHES
2. VALVE WITH FULLCUT DISC CARRIES A PRESSURE RATING OF 150 P.S.I.
3. VALVE O.D. AND FLANGE BOLT CIRCLE MUST SHARE COMMON CENTER LINE. VALVE DESIGN TO BE PLACED BETWEEN ANSI 125 OR 150 LB FLANGES (NOT FOR USE WITH ASA 250 OR 300 LB FLANGES).
4. Q DIMENSION: IS THE MINIMUM FLANGE OR PIPE I.D. TOLERABLE FOR PROTECTION OF DISC SEALING EDGE WHILE OPERATING BETWEEN FLANGES.

2"-6" HAVE AN ADDITIONAL 5TH HOLE DRILLED IN TOP PLATE THAT WILL ENABLE VALVE TO BE LOCKED IN THE CLOSED POSITION WHEN USING A LOCKING HANDLE



COMPONENT	NUMBER	MATERIAL
STEM BUSHING TOP	1	
STEM SEAL	1	
SEAT	1	
STEM	1	
SCREW AND O-RING	2(3 F/12")	
DISC	1	
STEM BUSHING BOTTOM	1	
BODY	1	

VALVE DIMENSIONS												TOP PLATE DRILLING						TAPPED LUG DRILLING		
												ISO DRILLING			STD DRILLING					
SIZE	A	B	C	D	E	F	G	H	Q	KEY WAY	WT. LBS	B. CIRCLE	HOLES	HOLE DIA.	B. CIRCLE	HOLES	HOLE DIA.	B. CIRCLE	HOLES	HOLE DIA.
2	4.000	.375	.563	1.250	4.063	4.125	2.125	1.625	1.531	N/A	7.500	2.760	4	.375	3.250	4	.438	4.750	4	.625-11 UNC
2.5	4.000	.375	.563	1.250	4.625	4.875	2.500	1.750	1.969	N/A	10.000	2.760	4	.375	3.250	4	.438	5.500	4	.625-11 UNC
3	4.000	.375	.563	1.250	5.000	5.375	3.125	1.750	2.689	N/A	11.000	2.760	4	.375	3.250	4	.438	6.000	4	.625-11 UNC
4	4.000	.438	.625	1.250	6.000	6.875	4.125	2.000	3.719	N/A	17.000	2.760	4	.375	3.250	4	.438	7.500	8	.625-11 UNC
5	4.000	.438	.625	1.250	6.000	7.750	5.188	2.125	4.813	N/A	21.000	2.760	4	.375	3.250	4	.438	8.500	8	.750-10 UNC
6	4.000	.438	.625	1.250	6.625	8.750	6.125	2.125	5.813	N/A	26.000	2.760	4	.375	3.250	4	.438	9.500	8	.750-10 UNC
8	6.000	.500	.750	1.250	8.313	11.000	8.125	2.500	7.813	N/A	42.000	4.020	4	.438	5.000	4	.563	11.750	8	.750-10 UNC
10	6.000	.625	.875	1.250	9.125	13.375	10.125	2.500	9.906	N/A	65.000	4.020	4	.438	5.000	4	.563	14.250	12	.875-09 UNC
12	6.000	N/A	1.125	2.000	10.645	16.125	12.094	3.000	11.844	.250 X .250	95.000	4.020	4	.438	5.000	4	.563	17.000	12	.875-09 UNC

ZONE	REV	DATE	BY	APP'D	ECN	DESCRIPTION
B1	4	05/07/10	DSS	CJH	347	REMOVED MATERIALS
B4	3	04/25/08	DSS	CJH		CORRECTED COLUMNS B & C
A1	2	10/25/07	DSS	CJH		UPDATED TITLEBLOCK
E4	1	02/18/05	TJM	TJM		ADDED NOTE

Ultraflo Corporation
A Subsidiary of Bray International, Inc.

#8 Trautman Ind. Dr.
Ste. Geneleve, Mo.
63670 800-950-1762

DRAWN BY	NAME	DATE	2" TO 12" 422 SERIES VALVE
CHECKED	TJM	02/03/04	
PART: 422 VALVE TAPPED LUG BODY, DISC, EPDM, NITRILE, VITON OR BUNA-N			
ECN:	DWG: 400-422-5		