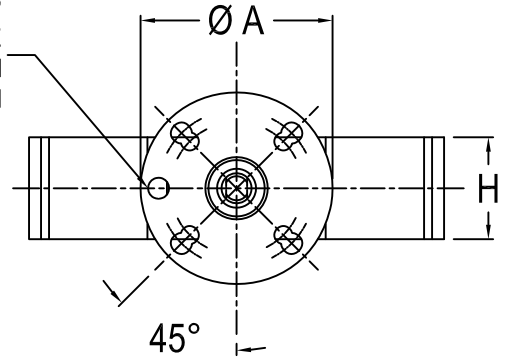


ATTENTION PLEASE CHECK THE ULTRAFLO WEBSITE AT www.ultraflovalve.com TO ENSURE YOU HAVE THE MOST RECENT COPY OF THIS DOCUMENT

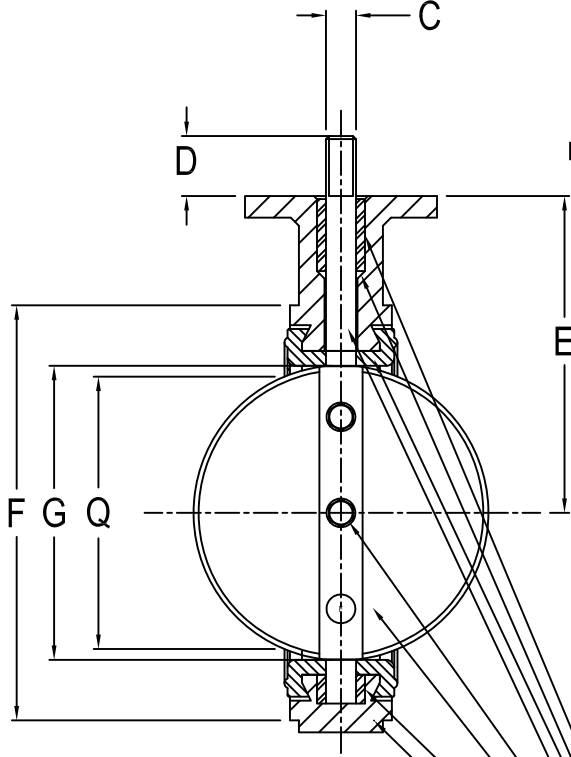
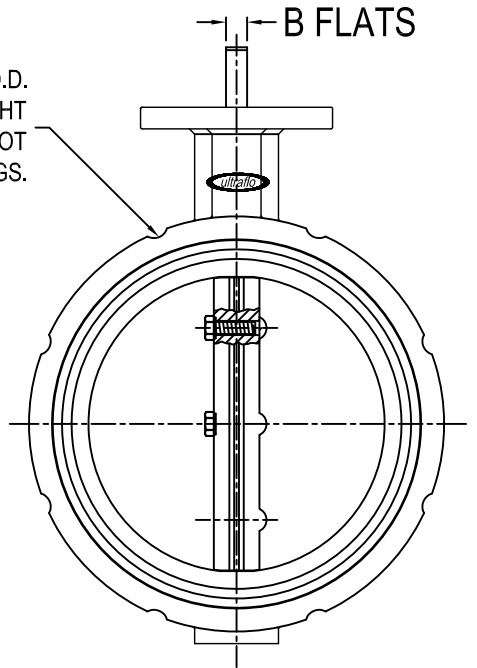
NOTES:

1. ALL DIMENSIONS IN INCHES
2. VALVE WITH FULLCUT DISC CARRIES A PRESSURE RATING OF 150 P.S.I.
3. VALVE O.D. AND FLANGE BOLT CIRCLE MUST SHARE COMMON CENTER LINE. VALVE DESIGN TO BE PLACED BETWEEN ANSI 125 OR 150 LB FLANGES (NOT FOR USE WITH ASA 250 OR 300 LB FLANGES).
4. Q DIMENSION: IS THE MINIMUM FLANGE OR PIPE I.D. TOLERABLE FOR PROTECTION OF DISC SEALING EDGE WHILE OPERATING BETWEEN FLANGES.

2"-6" HAVE AN ADDITIONAL 5TH HOLE DRILLED IN TOP PLATE THAT WILL ENABLE VALVE TO BE LOCKED IN THE CLOSED POSITION WHEN USING A LOCKING HANDLE



GROOVES ON BODY O.D. ACCOMMODATE LIGHTWEIGHT FLANGES. GROOVES ARE NOT NEEDED ON 8" OR 12" HOUSINGS.



COMPONENT	NUMBER	MATERIAL
STEM BUSHING TOP	1	
STEM SEAL	1	
SEAT	1	
STEM	1	
SCREW AND O-RING	2(3 F/12")	
DISC	1	
STEM BUSHING BOTTOM	1	
BODY	1	

VALVE DIMENSIONS

TOP PLATE DRILLING

SIZE	A	B	C	D	E	F	G	H	Q	KEY WAY	WT. LBS	ISO DRILLING			STD DRILLING		
												B. CIRCLE	HOLES	HOLE DIA.	B. CIRCLE	HOLES	HOLE DIA.
2	4.000	.375	.563	1.250	4.063	4.125	2.125	1.625	1.531	N/A	6.000	2.760	4	.375	3.250	4	.438
2.5	4.000	.375	.563	1.250	4.625	4.875	2.500	1.750	1.969	N/A	8.000	2.760	4	.375	3.250	4	.438
3	4.000	.375	.563	1.250	5.000	5.375	3.125	1.750	2.689	N/A	9.000	2.760	4	.375	3.250	4	.438
4	4.000	.438	.625	1.250	6.000	6.875	4.125	2.000	3.719	N/A	13.000	2.760	4	.375	3.250	4	.438
5	4.000	.438	.625	1.250	6.000	7.750	5.188	2.125	4.813	N/A	15.000	2.760	4	.375	3.250	4	.438
6	4.000	.438	.625	1.250	6.625	8.750	6.125	2.125	5.813	N/A	19.000	2.760	4	.375	3.250	4	.438
8	6.000	.500	.750	1.250	8.313	11.000	8.125	2.500	7.813	N/A	31.000	4.020	4	.438	5.000	4	.563
10	6.000	.625	.875	1.250	9.125	13.375	10.125	2.500	9.906	N/A	47.000	4.020	4	.438	5.000	4	.563
12	6.000	N/A	1.125	2.000	10.645	16.125	12.094	3.000	11.844	.250 X .250	88.000	4.020	4	.438	5.000	4	.563

ZONE	REV	DATE	BY	APP'D	ECN	DESCRIPTION
B1	5	05/06/10	DSS	CJH	374	REMOVED MATERIALS
B4	4	04/25/08	DSS	CJH		CORRECTED COLUMN B & C
A1	3	10/25/07	DSS	CJH		UPDATED TITLEBLOCK
E2	2	06/20/05	TJM	TJM		ADDED DRAWING NOTES
E4	1	02/18/05	TJM	TJM		REVISED NOTE

Ultraflo Corporation
A Subsidiary of Bray International, Inc.

#8 Trautman Ind. Dr.
Ste. Genevieve, Mo.
63670 800-950-1762

DRAWN BY	NAME	DATE	2" TO 12" 400 SERIES VALVE
TJM	TJM	11/05/03	
CHECKED	TJM	11/05/03	
PART: 400 VALVE WAFER BODY, DISC			
EPDM, NITRILE, VITON OR BUNA-N SEAT			
ECN:	DWG: 400-422-2		