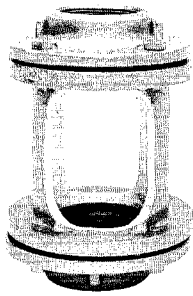
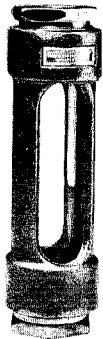


CYLINDRICAL SHEATHED INDICATORS



Style 1000-S
Threaded Connections



Style 4000-S
Threaded Connections

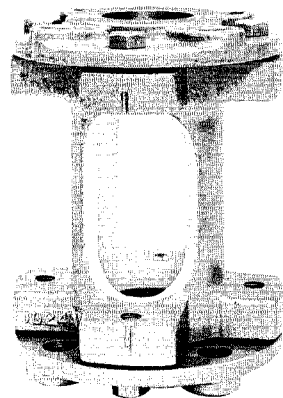
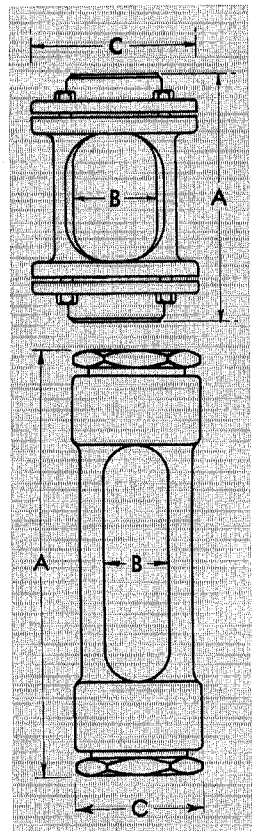
Cylindrical Sheathed Sight Flow Indicator

All of the units on this page are designed for use in either horizontal or vertical pipe lines which may be subject to some mechanical strain.

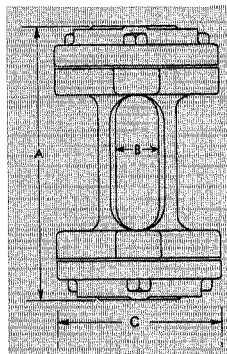
They are all fabricated using borosilicate tubes and cylinders. Styles 1000-S and 860-F are provided with a rugged cast iron body and the ends are heavy castings of metals required for a specific service. The joints around the cylinders are made through a stuffing box type seal.

Style 4000-S is also a tube type of a lighter construction, using bronze bodies with heads made from bar stock of various metals. This construction allows semi-automatic production with resulting lower costs.

In all units illustrated on this page, the solution or gas does not come in contact with the bodies—only the heads, glass and gasket material.



Style 860-F
Flanged Connections



STYLE 860-F

Pipe Size	DIMENSIONS			Approx. Weight	Pressure Rating PSIG
	A	B	C		
1/2"	6-1/8"	13/16"	3-1/2"	5#	150
3/4"	6-3/8"	1-1/16"	3-7/8"	8#	150
1"	6-3/8"	1-1/16"	4-1/4"	11#	150
1-1/2"	6-3/4"	1-5/8"	5"	16#	150
2"	7-5/8"	2"	6"	23#	120
2-1/2"	7-7/8"	2-3/8"	7"	31#	100
3"	8-1/8"	2-3/4"	7-1/2"	33#	100

A' Dimension ± 1/8"

STYLE 1000-S

Pipe Size	DIMENSIONS			Approx. Weight	Pressure Rating PSIG
	A	B	C		
1/4"	7"	7/8"	2-3/4"	4#	150
1/2"	7"	7/8"	2-3/4"	4#	150
3/4"	7"	1-1/8"	3-1/8"	5#	150
1"	7"	1-1/8"	3-1/8"	5#	150
1-1/4"	7-5/8"	1-1/2"	4-1/8"	9#	150
1-1/2"	7-5/8"	1-1/2"	4-1/8"	9#	150
2"	7-5/8"	3"	5-1/4"	14#	100

A' Dimension ± 1/8"

Style 4000-S

Pipe Size	DIMENSIONS			Approx. Weight
	A	B	C	
1/4"	4-7/8"	5/8"	1-1/2"	1#
3/8"	4-7/8"	5/8"	1-1/2"	1#
1/2"	6"	3/4"	1-3/4"	2#
3/4"	6-5/8"	1"	2"	2-1/2#
1"	6-5/8"	1"	2"	2-1/2#
1-1/4"	8-7/8"	1-3/8"	2-7/8"	6#
1-1/2"	8-7/8"	1-3/8"	2-7/8"	6#

Pressure Rating—150 PSIG