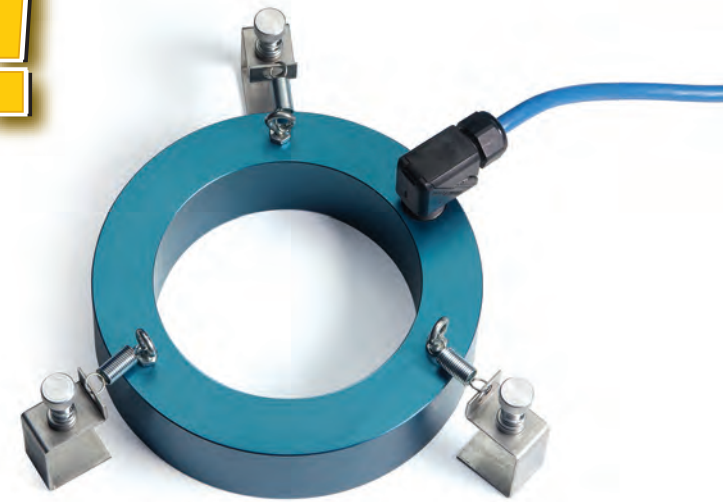


Simply Brilliant!

See the Video!

2 minute demonstration at jacoby-tarbox.com/lighting



Double the brilliance by simply placing a 4" Phaeton XTL inside a 6" Phaeton XTL.



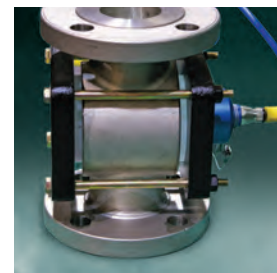
Simple installation. The Phaeton XTL clips on in two minutes or less.



Cool operation eliminates "baked-on" product blocking the window.



Illuminate units as small as 1/4" with the Phaeton SL.



JACOBY-TARBOX®

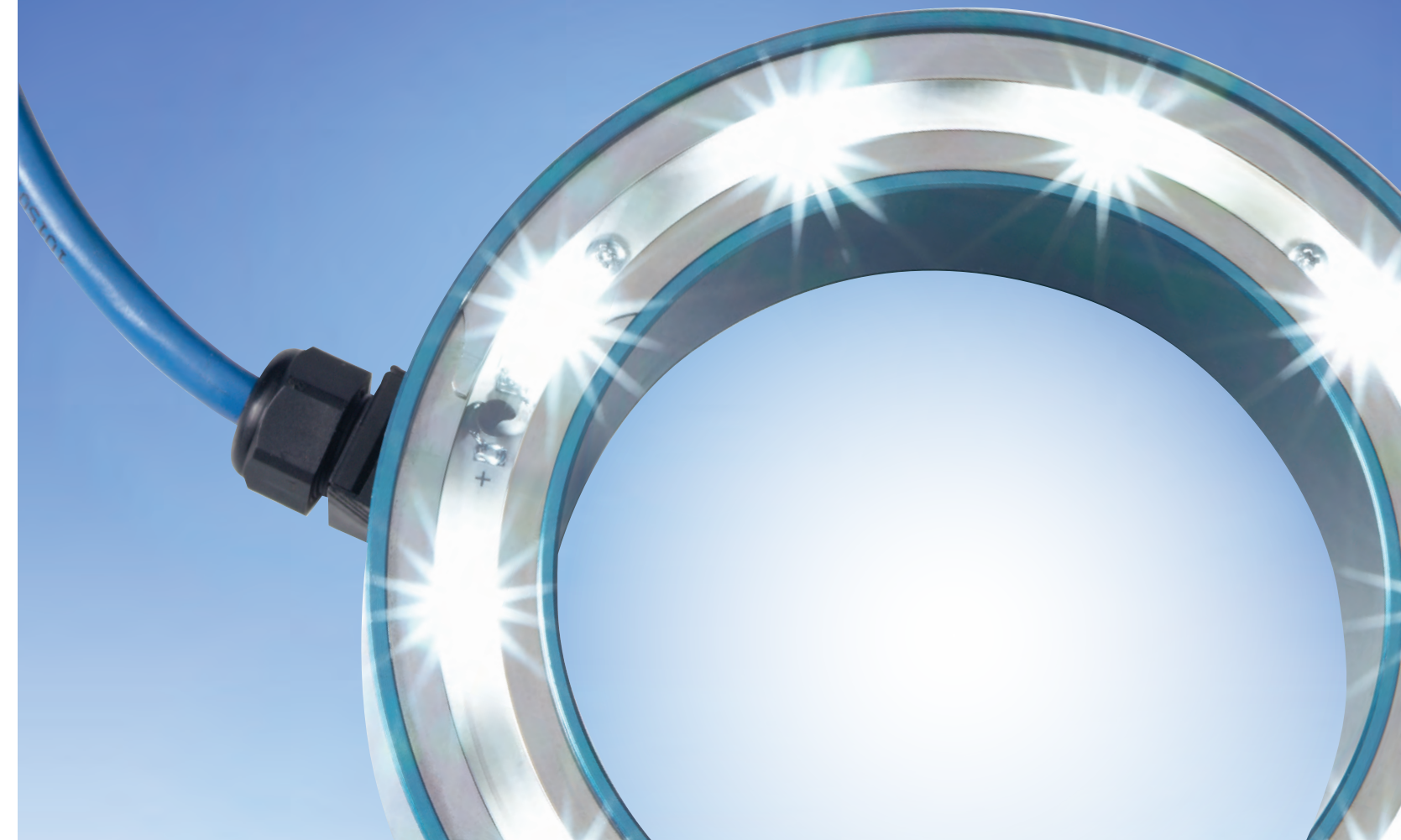
A PRODUCT OF CLARK-RELIANCE

CLARK-RELIANCE CORPORATION
16633 Foltz Parkway, Strongsville, OH 44149 U.S.A. PHONE +1 440-572-1500
jacobytarbox@clark-reliance.com www.jacobytarbox.com

Phaeton® LED Explosion Proof Process Lighting

*for Tanks, Vessels, Sight Flow Indicators
and OEM Equipment*

JACOBY-TARBOX®
A PRODUCT OF CLARK-RELIANCE



Simply Brilliant! 33X Brighter

See the video! 2 minute demonstration: jacobytarbox.com/lighting

SIMPLY

Tank and sight flow indicator lighting has never been simpler. Using the latest LED technology, Phaeton XTL Tank Lights & Phaeton SL Sight Flow Indicator Lights:

- Are rated for over 10 years continuous duty... no need to turn on and off
- Consume less than one amp...so they stay cool enough to touch even when on
- Illuminate with cool light, keeping product from baking on the window
- Require no maintenance. Need to clean it? Unclip and wash...no need to disconnect
- Install or retrofit in 2 minutes or less on any tank window 4" (100mm) and larger (for view thru) or any sight flow indicator 1/4" (6mm) and larger



Intrinsically Safe LED Sight Flow Indicator Lights
SL Series



Intrinsically Safe LED Tank Lights
XTL Series



BRILLIANT

LED tank lights and sight flow indicator lighting have never been brighter:

- 33x brighter than the first generation product
- Uses 1/20 the power of a 100 watt bulb, without the heat
- Minimizes reflective light...mounts directly against the window
- XTL available in 4" (100mm) and 6" (150mm) sizes
- SL is 2" (50mm) and fits 1/4" (6mm) thru 3" (80mm) units
- For the ultimate in brilliance, a 4" XTL model can "nest" inside of a 6" XTL unit to DOUBLE the brightness!



View-thru simplicity! Because you look through the Phaeton XTL Series light, there is no need for a second window...one is all that's needed for both illumination and viewing.

Phaeton® Explosion Proof Lights

XTL

USA/CANADA APPROVALS:
CLASS I, DIVISION 1, GROUPS B,C,D T4 Ta=122°F (50°C)
CLASS II, DIVISION 1, GROUPS E,F,G T4 Ta=122°F (50°C)



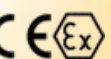
- Intrinsically safe output (Shielded cable)
- NEMA 4X rating (Anodized Aluminum Housing, 316SS optional)

SL Only

USA/CANADA APPROVALS:
CLASS I, DIVISION 1, GROUPS B,C,D T4
CLASS I, ZONE 1, AEx db [ib] IIB+H2 T4 Gb (POWER SUPPLY)
CLASS I, ZONE 1, AEx ib IIB+H2 T4 Gb (LIGHT)
Ex db [ib] IIB+H2 T4 Gb (POWER SUPPLY)
Ex ib IIB+H2 T4 Gb (LIGHT)
-40°F (-40°C) ≤ Ta ≤ 140°F (60°C)



ATEX APPROVALS:
II 2(2) Ex db [ib] IIB+H2 T4 Gb (POWER SUPPLY)
II 2 G Ex ib IIB+H2 T4 Gb (LIGHT)
-40°F (-40°C) ≤ Ta ≤ 140°F (60°C)



IECEx:
Ex db [ib] IIB+H2 T4 Gb (POWER SUPPLY)
Ex ib IIB+H2 T4 Gb (LIGHT)
-40°F (-40°C) ≤ Ta ≤ 140°F (60°C)

